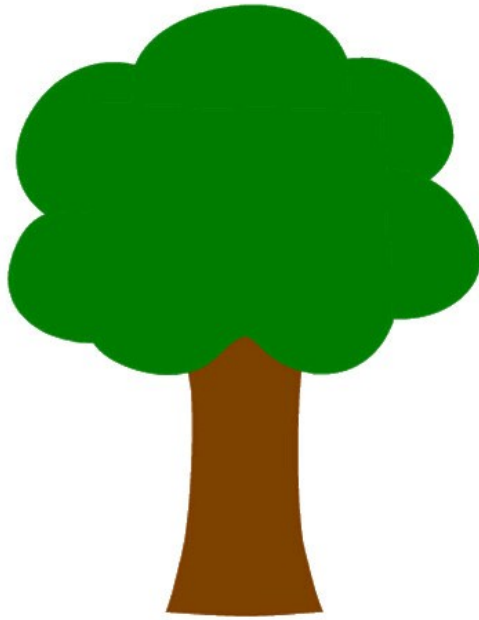


# Meet a Tree



## Partner up!

1. Have one person in each pair be blindfolded/eyes shut
2. The non-blindfolded person acts as a guide and leads his/her partner to a tree
3. The blindfolded person tries to find all the details of the tree without using sight
4. Once the blindfolded partner has a good understanding of the tree, the guide will lead their partner back to the starting point
5. Blindfolded person becomes unblindfolded and goes looking for their tree
6. Switch roles and start over!
7. For younger kids, just compare differences between trees.