



Conservation News

Conservation Information, Education & Technical Assistance Since 1964

SPRING
2023



We moved! Visit us at our new office located at 3350 Hill Ave., Suite K, in Toledo (the far end of the East Drive)



For the first time in almost four decades, the Lucas SWCD has moved into a new office off of Hill Avenue in Toledo! The new space provides private offices for staff, indoor classroom/workshop space, on-site storage, and outdoor greenspace for future demonstration projects.

We are grateful to the residents of the City of Maumee, the Maumee Uptown Business Association, our many neighbors, the Paukens, and our building buddy, Jason at Jacky's Ice Cream Depot, for their kindness and support over the years -- we will miss you and invite you to visit us in our new office!

Get to know your soil this spring!

Whether you are growing a field of corn, a patch of tomatoes, or just trying to improve your lawn, a good first step is to test your soil. A soil test will tell you the current state of your soil, the available nutrients, the pH, the percentage of organic matter, and more. Knowing all of this will help determine what your soil needs to adequately grow your plants. You can purchase a soil test kit through our office for \$10 plus sales tax. Stop by the office or go to our online store (Lswcd-shop.square.site) to learn more!



What's Inside:

<i>2022 Award Winners</i>	2
<i>Tree, Shrub & Garden Sale</i>	3-4
<i>Backyard Conservation &</i>	5
<i>Native Plant Sale</i>	
<i>Fish & Cover Crop Sale</i>	6
<i>District Updates</i>	7



If you love the Lucas SWCD and want to help us continue to grow and expand our ability to implement natural resource conservation in our County, ask us about our



"Friends of" group!



Reminder: ORC 939.08/905.326 Manure & Fertilizer Please know the rules and your responsibilities prior to application.

Learn more at: <https://bit.ly/2POBH7u>



ALWAYS CHECK THE FORECAST!



FOLLOW US ON SOCIAL MEDIA TO STAY UP TO DATE! @LUCASSWCD

Upcoming Events

February 20

Presidents Day - Office Closed

February 28

Board Meeting - 9:00 AM

March 28

Board Meeting - 9:00 AM

April 7

Good Friday-Office Closed 12pm

April 18-19

Tree Sale Pick-up Dates

April 25

Board Meeting - 9:00 AM

May 12

Native Plant Sale Pick-up

May 18

Spring Fish Sale Pick-up

May 23

Board Meeting - 9:00 AM

May 29

Memorial Day - Office Closed

June 19

Juneteenth - Office Closed

June 27

Board Meeting - 5:00 PM at
BCCA (Whitehouse)

July 4

Fourth of July - Office Closed

July 11-16

Lucas County Fair

July 25

Board Meeting - 9:00 AM

August 22

Board Meeting - 9:00 AM

Congratulations to the 2022 Conservation Award Winners!

2022 Outstanding Educator Award

Kristina Patterson

As the Executive Director of Partners for Clean Streams, Kris has been an outstanding partner of the Lucas SWCD and an integral part of the water conservation and stewardship efforts in northwest Ohio. Most recently, Kris partnered with the Lucas SWCD and the University of Toledo – Lake Erie Center on a National Oceanic and Atmospheric Administration Bay-Watershed Education and Training grant project to provide water quality education and training to local teachers.



2022 Cooperator of the Year

Doug & Joe Box

Brother's Doug and Joe Box work together to manage over 750 acres of individual and family farmland in Providence Township. For the past 3 years, they have participated in the eField Program assisting with field level agricultural research done by The Ohio State University. Doug and Joe were among the first to sign up for the H2Ohio Phosphorus Reduction Program in 2020 and have been steadfast participants in the program ever since.



2022 Conservation Reserve Enhancement Program Award

Bill & Cynthia Wauford

The Waufords live on a picturesque property in Jerusalem Township, where Crane Creek, a tributary of Lake Erie, runs through it. They have enrolled approx. 30 acres in the Lake Erie CREP and H2Ohio Wetlands program, as well as installed filter strips and windbreaks. Sandhill Cranes, Wood Ducks, Bald Eagles, and many species of water fowl as well as River Otters and American Beavers can be seen benefiting from the habitat they have established and preserved.



2023 Tree, Shrub & Garden Sale

Below you will find the species descriptions and pricing for our 2023 Tree, Shrub & Garden Sale!

We are no longer accepting mail-in orders. Orders are due by March 31st. No delivery.

To place an order, you can:

- 1). Go online to Lswcd-tree.square.site OR
- 2). Visit our office at 3350 Hill Ave., Suite K in Toledo

Last Name A-M: Pick-up 4/18
Last Name N-Z: Pick-up 4/19
@ The Lucas Co. Fairgrounds
From 9:00 AM to 5:00 PM

Conifers - Bareroot



Norway Spruce *Picea abies*
\$17.00 per 25-pack, 12-18" Seedlings
 A large tree with dark green foliage and heavy spreading branches. Needles are short. Grows moderate to fast, reaching 35 ft. in 20 years. Grows well in most soil and drainage conditions. Height 40-60 ft. at maturity and 25-30 feet in spread.



Concolor Fir *Abies concolor*
\$17.00 per 25-pack, 9-12" Seedlings
 Also known as a White Fir. Grows to 100 ft and is one of the most beautiful and easy to care for evergreens. Ashy gray trunk with soft, silvery blue foliage. Make terrific Christmas trees. Fairly slow-growing and does best in well-drained soils.

Windbreak Special - 100 Norway Spruce Seedlings for \$58.00
 Windbreaks are a conservation practice that protect topsoil from erosion, as well as protect homes or structures from cold or damaging winds. Norway Spruce are a common tree used for this practice. Contact our office and ask about renting our tree planter! (419) 893-1966



Green Rocket Hybrid Cedar *Thuja plicata x*
\$15.00 per 18-30" tree
 Fast growing, up to 3 ft./year! A white-tail deer resistant Arborvitae hybrid with nice cedar-like aroma. Stays green longer than other Arbs in winter. Tolerates most soil conditions. Up to 25 ft. tall by 6-10 ft. wide.

Hardwoods - 3 gallon pots



Serviceberry *Amelanchier laevis*
\$28.00 per 5-6' tree
 Also known as Juneberry. Edible berries are a good substitute for blueberries in alkaline soils. Can be grown as a small tree or large suckering shrub, loaded with white flowers in the spring followed by red/purple fruit in summer. Birds love this tree! Mature height is 15-25 feet.



Tulip Poplar *Liriodendron tulipifera*
\$28.00 per 5-6' tree
 An Ohio native member of the magnolia family. Tall, fast-growing deciduous tree that reaches 25-30 feet in 10-12 years. Large tulip-like flowers in spring with broad, showy leaves that turn bright yellow in fall. Great shade tree, can reach 90+ feet by 20-30 feet wide.



Eastern Redbud *Cercis canadensis*
\$28.00 per 5-6' tree
 A small tree forming a graceful, rounded crown. Lavender pink flowers come in April followed by lovely heart-shaped leaves and small bean pods. Bright yellow fall leaf color, this makes for a nice landscape tree. Grows to 15-30 feet in height by a similar spread.

Scan this QR code with your smart phone's camera to place your order online!

2023 Tree, Shrub & Garden Sale

Shrubs - Bareroot



American Hazelnut
Corylus americana
\$8.00 per 5-pack, 12-18" Seedlings
 A native shrub that grows to 10 feet in 10 years. Serrated leaves turn red or purple in fall. Half-inch nuts shell easy and can be eaten raw or ground into flour. Good for wildlife food and cover. Also makes a nice border screen when planted as a row. Tolerates all soils and needs full/part sun.



Ninebark *Physocarpus opulifolius*
\$8.00 per 5-pack, 12-18" Seedlings
 A showy native shrub with pinkish-white flower clusters in late spring, attractive small fruits in summer, bright fall foliage, and interesting flaky bark in winter. Excellent nectar plant for pollinators! Grows 5-10 feet in height and thrives in any soil/sun condition.

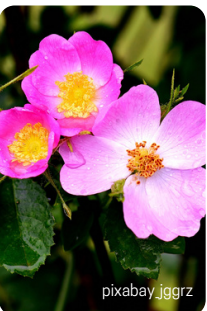


Buttonbush
Cephalanthus occidentalis
\$8.00 per 5-pack, 18-24" Seedlings
 A multi-stemmed shrub that has attractive ball-shaped, creamy white flowers in August that pollinators find irresistible. Provides nut-like seeds and good nesting sites for birds. Great for rain gardens, wet sites, and grows in an array of soils. Tolerates both sun and shade. Grows up to 10 feet in height and width.

Habitat Packets - Bareroot



Fruit & Berries Packet
\$40.00 per 10-pack
 Contains:
 (2) 12-18" Downy Serviceberry, *Amelanchier arborea*
 (2) 12-18" Elderberry, *Sambucus canadensis*
 (3) 12-18" Native Flowering Raspberry, *Rubus ideaus*
 (3) 6-12" Paw Paw, *Asimina triloba*
Humans and wildlife will benefit from this pack!



Backyard Habitat Packet
\$40.00 per 10-pack
 Contains:
 (2) 12-18" Red Osier Dogwood, *Cornus sericea*
 (2) 12-18" Choke Cherry, *Prunus virginiana*
 (2) 12-18" American Plum, *Prunus americana*
 (2) 12-18" Meadowsweet, *Filipendula ulmaria*
 (2) 12-18" Pasture Rose, *Rosa carolina*
Attract bees, butterflies, and more to your yard!

Native Prairie Seed Packets

Our 1-ounce seed packets cover approximately 250 square feet (about 12' by 20'). They are a mix of prairie flowers and grasses genetically native to our region. Good for naturalizing small areas, or for use as transplants for landscaping!

Two mixes are being offered this year -- a dry mix suitable for sandy, well-drained soils and a moist mix suited for average to wet soils. These mixes are assembled from seeds originally collected in Lucas County. The continued propagation of these native seeds helps to ensure the genetic integrity of our local species is preserved. By planting this seed in northwest Ohio, you are helping to enhance and preserve the globally rare Oak Openings region, which is home to more rare plant species than any other area in Ohio!

Scan the QR Code to view the species in each seed mix!



To place your order:

1. Stop by our office during normal business hours (M-F 8-4:30)
2. Go online at Lswcd-tree.square.site or scan this QR code with your smart device's camera.



Orders due by: March 31st
Order Pick-up: April 18-19th at the Lucas County Fairgrounds from 9:00 AM to 5:00 PM

BACKYARD CONSERVATION & NATIVE PLANT SALE



DISPLAYS AND STAFF
ON HAND TO ANSWER
YOUR QUESTIONS!

This is your one-stop-shop for all things backyard conservation this spring. You can preorder over 20 different species of native plants, rain barrels, compost bins, soil test kits, bird houses, bat shelters, & more!



Drive Thru Pick-up:
Friday, May 12th 9:00AM - 5:00PM
@ The Lucas County Fairgrounds
1406 Key St., Maumee

Starting April 1st,
place your order in our
office or online at
[Lswcd-natives.square.site](https://lswcd-natives.square.site)



Save the Date!
Blue Week
May 13-21, 2023

Plan to take part in Blue Week and experience Oak Openings like never before! Hikes, educational programming for all ages, contests, plant sale, & more.



Why Native Matters

By: Penny Bollin, Urban Conservation Technician

Simply put, native plants are those that have existed in an area for a long enough time to have evolved in harmony with the soil, climate, and other plants and animals surrounding them. Below are several reasons why planting native matters and how incorporating them into your landscape has a positive impact on our world.

- The roots of native plants are traditionally much longer than their non-native counterparts and therefore prevent erosion, act as carbon sinks, transport nutrients, and reduce runoff during rainfall.
- Native plant nectar, seeds and berries provide a nutritional source of food for wildlife.
- Native plants attract beneficial insects by providing them food while they offer benefits to your yard and garden like pest control and pollination!
- Native plants are more adapted to the existing soil/climate conditions and therefore, after the first couple years, should not require watering or fertilization.
- Native plants are absolutely beautiful! They come in all sizes, shapes, and colors and there are options for every situation in your yard from moist, shady areas to dry, sunny areas.

By choosing native over non-native (and hopefully not any invasive!) plants, you are joining in on the effort to restore balance to our natural world. If you have questions about what natives will work for your yard or the difference between native, nonnative, and invasive, contact me at (419) 377-0065.

Spring Fish Sale - Orders due May 11th (mail-in orders no longer accepted)

An aerator truck from Fender's Fish Hatchery will distribute pre-ordered fish fingerlings on **Thursday, May 18, 2023** from **10:30 - 11:30 AM** at the **Lucas County Fairgrounds** in Maumee, Ohio. Each customer **MUST** bring their own container(s) to transport the fish home in. Each container **MUST** be lined with an unscented plastic bag (at least 10-gallon capacity) and half-filled with water from the pond. One container per 100 small fish or 1,000 minnows.



Number of fish to stock per acre :					
Stocking Combination	Bass	Bluegill	Catfish	Perch	Minnows
Bass-bluegill	100	500			1,000
Bass-bluegill-catfish	100	500	100		
Bass-perch	100			100	
Bass-bluegill-perch	100	500		100	
Bass-bluegill-catfish-perch	100	500	100	100	

***NOTICE** - The Lucas SWCD will no longer be offering White Amur or Redear Sunfish. These two species are not native to Ohio and pose a risk of becoming invasive species that alter native ecosystems.

<u>Species</u>	<u>Size</u>	<u>Price per Fish</u>
Largemouth Bass	2" - 3"	\$1.08
Yellow Perch	2" - 3"	\$1.08
Bluegill	2" - 4"	\$0.98
Channel Catfish	4" - 5"	\$0.93
Fathead Minnow	1" - 3"	\$0.11

Nature's Pond Conditioner
 1-gal - \$92.75
 5-gal - \$386.25

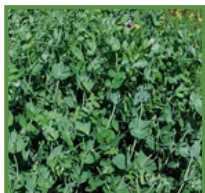
This all-in-one organic pond conditioner uses naturally-occurring beneficial bacteria, plant extracts, and enzyme blends to create clean, healthy ponds!



To place your order:

1. Stop by our office during normal business hours (M-F 8-4:30)
2. Go online at Lswcd-fish.square.site or scan this QR code with your smart device's camera.

Spring Cover Crop Sale - Orders due March 31st (mail-in orders no longer accepted)



We are offering four cover crop seed mixes this spring for use in your garden later this year that are well-suited for NW Ohio. Planting a cover crop in areas that are otherwise left barren protects your soil and also rejuvenates the soil and improves water infiltration. Mixes will be ready for pick-up either **April 18-19th** at the **Lucas County Fairgrounds** in Maumee from 9:00 AM to 5:00 PM or after the 19th at our office in Toledo.

1-lb. Cover Crop Mixes: \$7.50 per bag plus sales tax (cover 200-300 sq. ft.)

Summer Mix: a complex mix designed to rejuvenate and protect fallow ground through the summer for planting of late, cool season vegetables or fall cover crop. Plant after last frost or when soil is above 65F.

Color & Cover Mix: this mix is designed for maximum improvement in soil health and nutrient cycling. Plant August through mid-September. Can be planted around warm season vegetables.

Raised Bed Mix: this mix is designed to provide diverse root structures and organic matter to fortify and amend depleted soils. Attracts pollinators and beneficial insects! Plant August through mid-September.

Buckwheat: is a broadleaf, short-season cover crop that establishes, blooms, and reaches maturity in 70-90 days. Attracts pollinators with its white blooms and suppresses weeds. Plant through summer as needed.

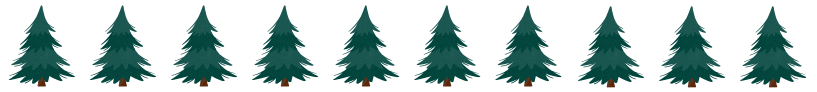


To place your order:

1. Stop by our office during normal business hours (M-F 8-4:30)
2. Go online at Lswcd-shop.square.site or scan this QR code with your smart device's camera.

Education Program Update:

By: Patrick Troyer, Education Specialist



In honor of Earth Day and Arbor Day later this spring, Lucas County students have the opportunity to receive a Norway Spruce seedling, free of charge, compliments of Lucas Soil and Water Conservation District! As part of this program, students receive a seedling pre-packaged with instructions on how to care for it along with a fun program where they learn all about the needs of trees. If you would rather do a class tree planted at the school, we can do that too! **Supplies are limited. To reserve your trees, please contact me via phone at (419) 280-6827 or email PTroyer@co.lucas.oh.us by Friday, February 24th at 3pm.**

Agricultural Program Updates:

By: Matthew Browne, H2Ohio Technician



Farmland Preservation

As local agricultural land diminishes due to it being converted into commercial and residential properties, the farmland that remains is put under greater strain as farmers are pressured to grow more food on less acres. One way of curtailing the development of land is through preservation programs. The Lucas SWCD is excited to announce that we are in the process of offering new opportunities for area landowners who are interested in protecting their land from development. **If interested, please contact me for more information at (419) 377-0901 or MBrowne@co.lucas.oh.us.**

"H2Ohio 2.0"

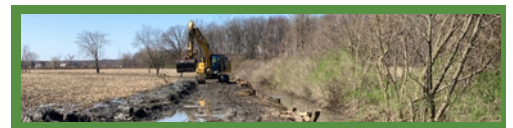
A new version of the H2Ohio program is anticipated to arrive later this summer. This new iteration of the H2Ohio Phosphorus Reduction Program is expected to be more streamlined and easier for producers to participate in, while continuing the benefit of reducing phosphorus runoff that can contribute to harmful algal blooms. Contact me if interested and wish to be placed on a waitlist to receive more information as it becomes available.

ODNR Wetland Grants

The Ohio Department of Natural Resource's H2Ohio Standard Wetland Grant Program offers funding to private landowners, municipalities, non-profits, and government entities for wetland restoration projects focused on water quality improvement. Projects can include, but are not limited to: the restoration and enhancement of wetlands, coastal marsh and floodplain reconnection, capturing stormwater, and stream bank improvements. Projects can be established on residential, agricultural, or commercial properties, so long as the program criteria can be met. There is no cost-share requirement for ODNR's H2Ohio program and new projects are accepted on a rolling basis. If interested in this opportunity, please contact the SWCD office or Rachel DeNoewer with the Ohio Department of Natural Resources at (614) 705-9978 or rachel.denoewer@dnr.ohio.gov.

Ditch Maintenance Update:

By: Dj Mears, Drainage/Agricultural Conservationist



The following ditches, and amounts, are what we will be collecting on in 2023: Ballard Ditch, in the amount of \$20,000; Beecher Ditch, in amount of \$2,000; Bench/Hagerman Ditch, in amount of \$55,000; Collins Ditch, in amount of \$2,000; Disher Ditch, in amount of \$10,000; Householder Ditch, in amount of \$30,000; Mosquito Creek Ditch, in amount of \$10,000; Schmitz Ditch, in amount of \$47,000; and Zaleski Ditch, in amount of \$5,500. Also, the 2022 Annual Report to the County Engineer can be found on our website at www.LucasSWCD.org/ditchmaintenance. If you have questions about our ditch maintenance program, please contact me at (419) 344-2371 or at DMears@co.lucas.oh.us.



NONPROFIT
ORGANIZATION
U.S. POSTAGE
PAID
TOLEDO, OH
PERMIT NO. 242

3350 Hill Ave., Suite K
Toledo, OH 43607

Office Hours:
Monday-Friday 8:00 AM-4:30 PM

Telephone: (419) 893-1966

Toll Free: 1-800-547-0272

Fax: (419) 893-3131

www.LucasSWCD.org



In this issue... New Office Location, Spring Plant Sales, Fish & Cover Crop Sales, Program Updates, & more!

District Staff

Joey Warner
District Manager

Dj Mears
Drainage/Agricultural
Conservationist

Jessica Grisier
Communication & Outreach
Coordinator

Matthew Browne
H2Ohio Technician

Penny Bollin
Urban Conservation Technician

Patrick Troyer
Education Specialist

Board of Supervisors

Kevin Joyce
Diane DeYonker
Stephen Loeffler
Tom Schoen
Jim Vogelbacher

Natural Resource

Conservation Service:

Clint Geldine - Lucas East
(419) 898-6431 ext. 3
Mike Weaver - Lucas West
(419) 583-3039

Lucas County Commissioners

Tina Skeldon Wozniak
Pete Gerken
Lisa Sobecki

The Lucas SWCD wishes to thank the following entities, whose financial support at the local level draws matching funds from the State of Ohio and/or in-kind support that enables the District to provide services to Lucas County:

- Lucas County Commissioners
- Cities of: Oregon, Toledo, and Sylvania
- Townships of: Harding, Jerusalem, Monclova, Richfield, Spencer, Springfield, and Sylvania
- Villages of: Holland; Ottawa Hills
- Lucas County Farm Bureau
- Lucas County Engineer's Office
- In-kind services from the USDA-NRCS, Ohio Dept. of Agriculture, and OFSWCD
- Grants from Ohio EPA and ODA

